



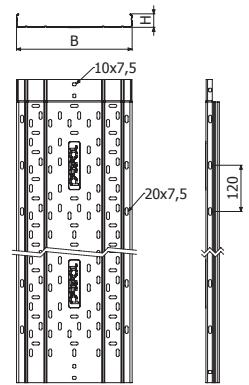
ERE H35



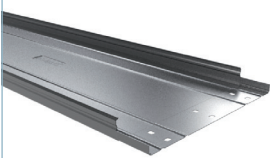
	B		H		GS		GC		i	i
	mm	inch	mm	inch	REF.	kg/m	REF.	kg/m		
ERE 100X35	100	4"	35	1 3/8"	2/1192	0,74	2/1222	1,10	3	3
ERE 150X35	150	6"	35	1 3/8"	2/1193	0,95	2/1223	1,42	0	1
ERE 200X35	200	8"	35	1 3/8"	2/1194	1,12	2/1224	1,67	4	6
ERE 300X35	300	12"	35	1 3/8"	2/1195	1,64	2/1225	2,24		

L = 3 m (10 ft)

4/100 x B1 - (2/4356-EZ // 2/6826-GC // 2/4925-i304)



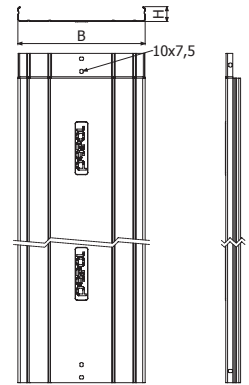
ERE-C H35



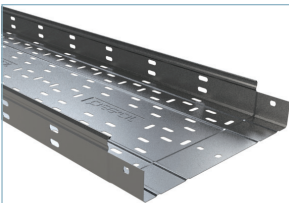
	B		H		GS		GC		i	i
	mm	inch	mm	inch	REF.	kg/m	REF.	kg/m		
ERE-C 100X35	100	4"	35	1 3/8"	2/1252	0,76	2/1282	1,14	3	3
ERE-C 150X35	150	6"	35	1 3/8"	2/1253	0,98	2/1283	1,46	0	1
ERE-C 200X35	200	8"	35	1 3/8"	2/1254	1,20	2/1284	1,78	4	6
ERE-C 300X35	300	12"	35	1 3/8"	2/1255	1,77	2/1285	2,42		

L = 3 m (10 ft)

4/100 x B1 - (2/4356-EZ // 2/6826-GC // 2/4925-i304)



ERE H60



	B		H		GS		GC		i304		i	i
	mm	inch	mm	inch	REF.	kg/m	REF.	kg/m	REF.	kg/m		
ERE 100X60	100	4"	60	2 3/8"	2/1197	0,95	2/1227	1,42	2/4795	1,25	3	3
ERE 150X60	150	6"	60	2 3/8"	2/1198	1,17	2/1228	1,35	2/4319	1,53	0	1
ERE 200X60	200	8"	60	2 3/8"	2/1199	1,46	2/1229	1,99	2/4688	1,80	4	6
ERE 300X60	300	12"	60	2 3/8"	2/1201	2,03	2/1231	2,56	2/4317	2,69		
ERE 400X60	400	16"	60	2 3/8"	2/1202	2,86	2/1232	3,54	2/4933	3,37		
ERE 500X60	500	20"	60	2 3/8"	2/1203	3,38	2/1233	4,19	2/5030	4,05		
ERE 600X60	600	24"	60	2 3/8"	2/1204	3,91	2/1234	4,83	2/4373	4,65		

L = 3 m (10 ft)

4/100 x B1 - (2/4356-EZ // 2/6826-GC // 2/4925 - i304)

